

Applications for Sullins Connectors:

- Aircraft Electronic Controls and Radio Communications
- Computing Equipment and Peripherals
- Consumer Electronics and Household Appliances
- Office Equipment
- Automotive Electronics and Accessories
- Casino Gaming Devices
- Medical Devices
- Industry Machinery and Process Control Equipment
- Telecommunication
- Vending Machines
- Burn-in Ovens and Test Equipment
- And more...

The Sullins Advantage

- Five-day Lead Time*
- Free Samples – Fast!
- High Quality and Reliable Connectors
- Engineering Design and Technical Support
- Connector Experts at Your Service Assist with Specific Project Requirements
- Design and Build Custom Parts to Suit Your Needs
- RoHS Compliance



High Density Card Edge Connectors

Features and Benefits:

1mm and 0.050" Card Edge Connectors

- Available in temperatures up to 150° C for demanding thermal applications
- Large selection of termination types and mounting styles are available for various applications

Bi-level Card Edge Connectors

- Available in temperatures up to 150° C for demanding thermal applications
- Available in 0.050"/0.100" and 0.078"/0.156" contact centers
- The only 0.050" connector in the market that offers current rating of 3 Amps per contact

PCI Express Connectors

- Conforms to PCI-SIG specifications
- Supports data transfer rate of 2.5Gbps in each direction
- Great for hot plug and hot swap functionality



www.sullinscorp.com

USA HQ | 801 E. Mission Rd., San Marcos, CA 92069, USA | +1-760-744-0125 | fax +1-760-744-6081
Taiwan | 10F, No. 268, Fuxing S. Rd., Sec. 2, Taipei, Taiwan | +886-2-2738-7377 | fax +886-2-2738-3586

*More customized specifications may require additional time to complete.

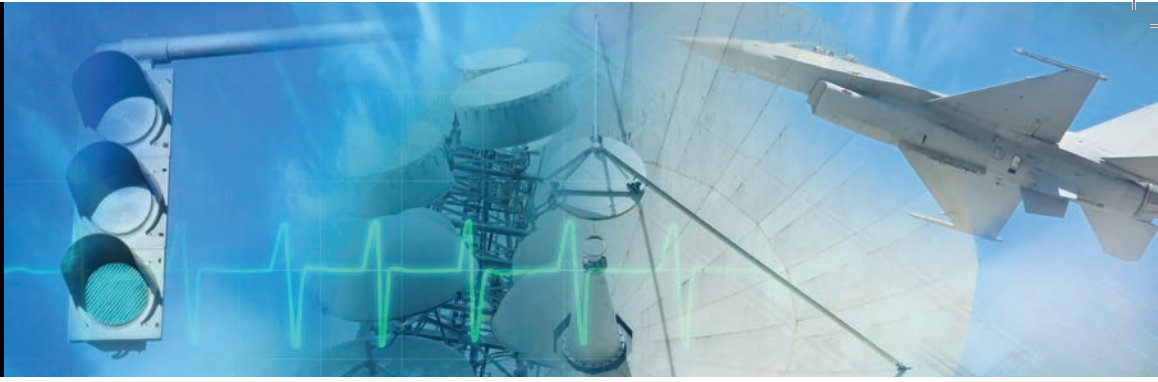
©2010 Sullins Connector Solutions



Order Samples and Products:

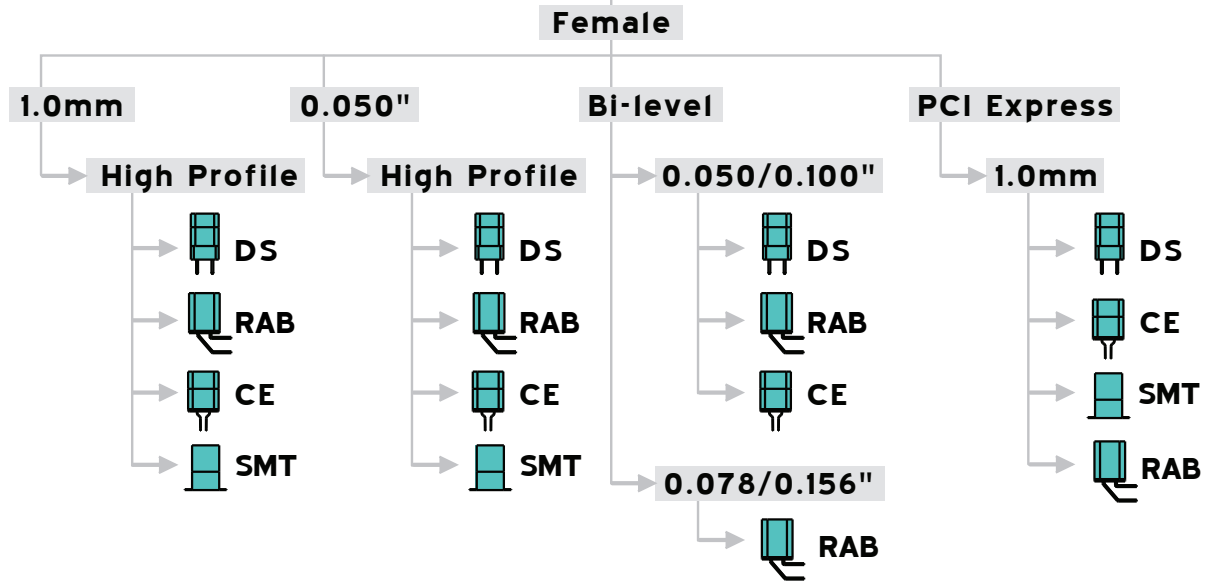
www.sullinscorp.com
info@sullinscorp.com
 760.744.0125
 888.774.3100 toll-free

Product Configuration Chart



High Density Card Edge Connectors

Standard Temperature



High Temperature

